

• **Subject: Knock-On door light is coming on by itself**

• **Below models with ECN and serial number range in alphabetical or numerical order**

Country	Model (ECN)	Serial Number Range (Model)	Country	Model (ECN)	Serial Number Range (Model)
US/AI	LFXS30796*(00)	All	US/AI	LMXS30796*(00)	All
US/AI	LFXC24796*(00)	All	US/AI	LMXC23796*(00)	All
	LSFXC2496*(00)				

Applicable only with symptoms below:

Applicable with every repair:

• **Extended Warranty**

This service is covered by an extended warranty  Yes  No

- If Yes, parts for ( ) years and labor for ( ) years by LG.

- If No, parts and labor are charged to the customer if outside warranty period.

• The warranty period, including any extended warranty above, starts from the original date of purchase.

## <Repair Information>

### 1. Symptoms and Causes

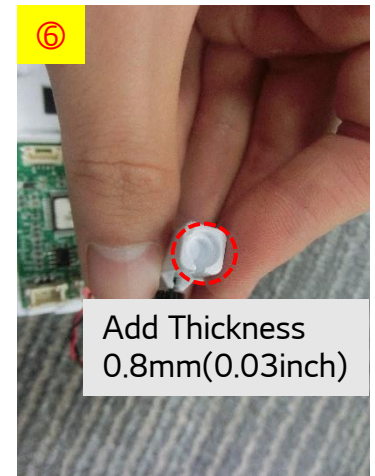
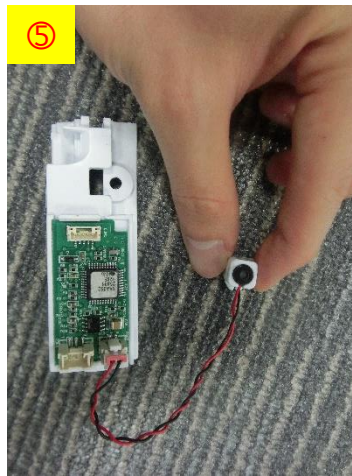
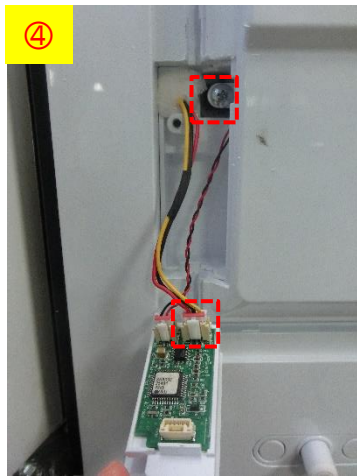
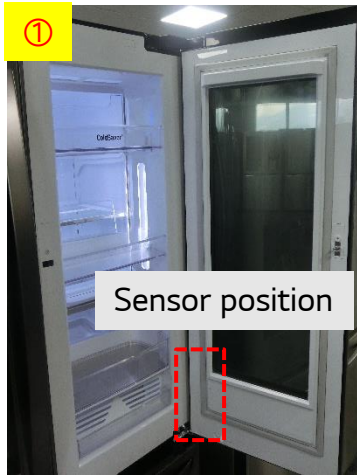
a) Symptoms : Knock-On Door light is coming on by itself.



Knock-On light operated due to external sound.

b) Causes : Due to Knock-On Micro sensor's installation, it can be operated by external sound.

## 2. Repair Instruction



- ① Open the Home bar Door
- ② Detach the Gasket of Home bar Door
- ③ Unscrew the Cover
- ④ Separate the housing and unscrew sensor
- ⑤ Detach the sensor cover
- ⑥ Add Sheet 0.8mm at the rear of the sensor

※ After that, please come back to the original position by reverse order

### 3. Current and New (Visual / Part Number & Name, etc.)



※Please make Thickness(0.8mm) by using paper or tape.

### 4. Part Interchangeable (Yes or No)

	Current Part	New Part
Current Product		✓
New Product		✓

### 5. Scrap Current Part in LG Warehouse

Yes	No
<input type="checkbox"/>	<input checked="" type="checkbox"/>

### 6. Others

N/A